

BRIDGE PLATE IN THE HUMERAL SHAFT

BRIDGE PLATE IN THE HUMERAL SHAFT

ANTERIOR PLATE

LATERAL PLATE

HELICAL PLATE

BRIDGE PLATE IN THE HUMERAL SHAFT

ANTERIOR PLATE

LATERAL PLATE

HELICAL PLATE

BRIDGE PLATE IN THE HUMERAL SHAFT

ANTERIOR PLATE

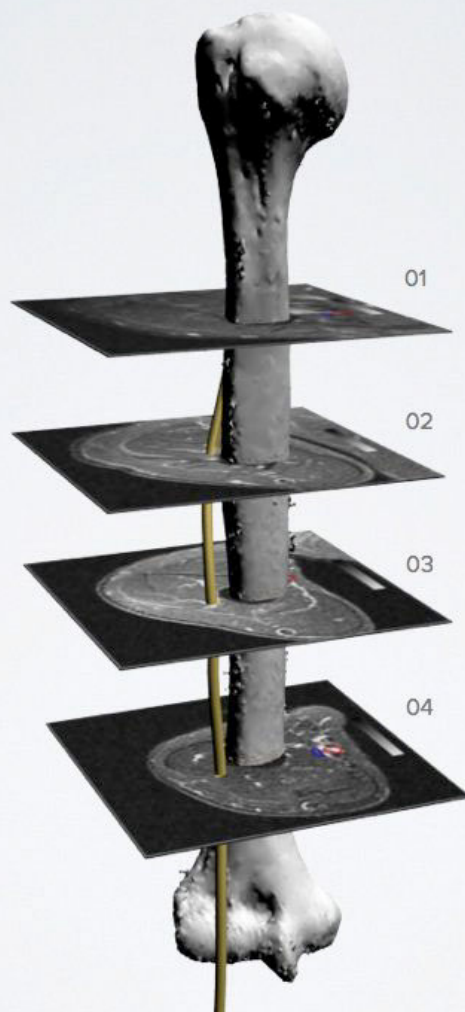
LATERAL PLATE

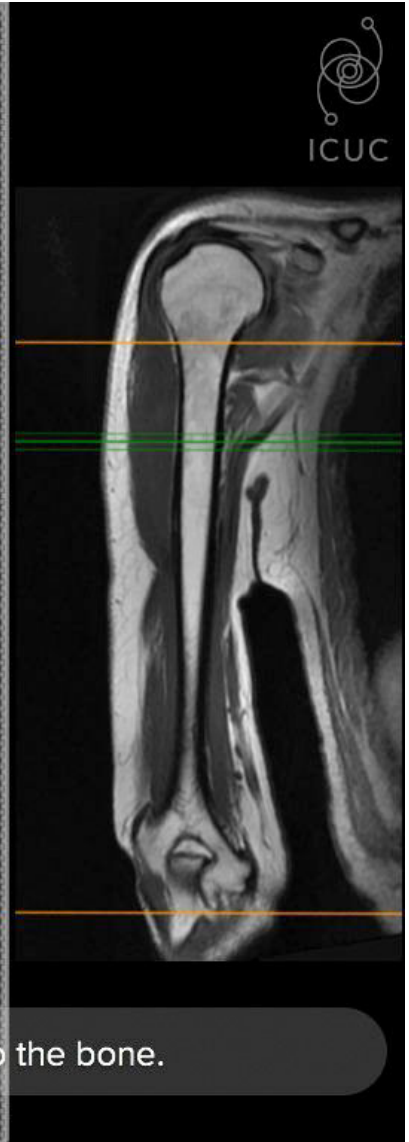
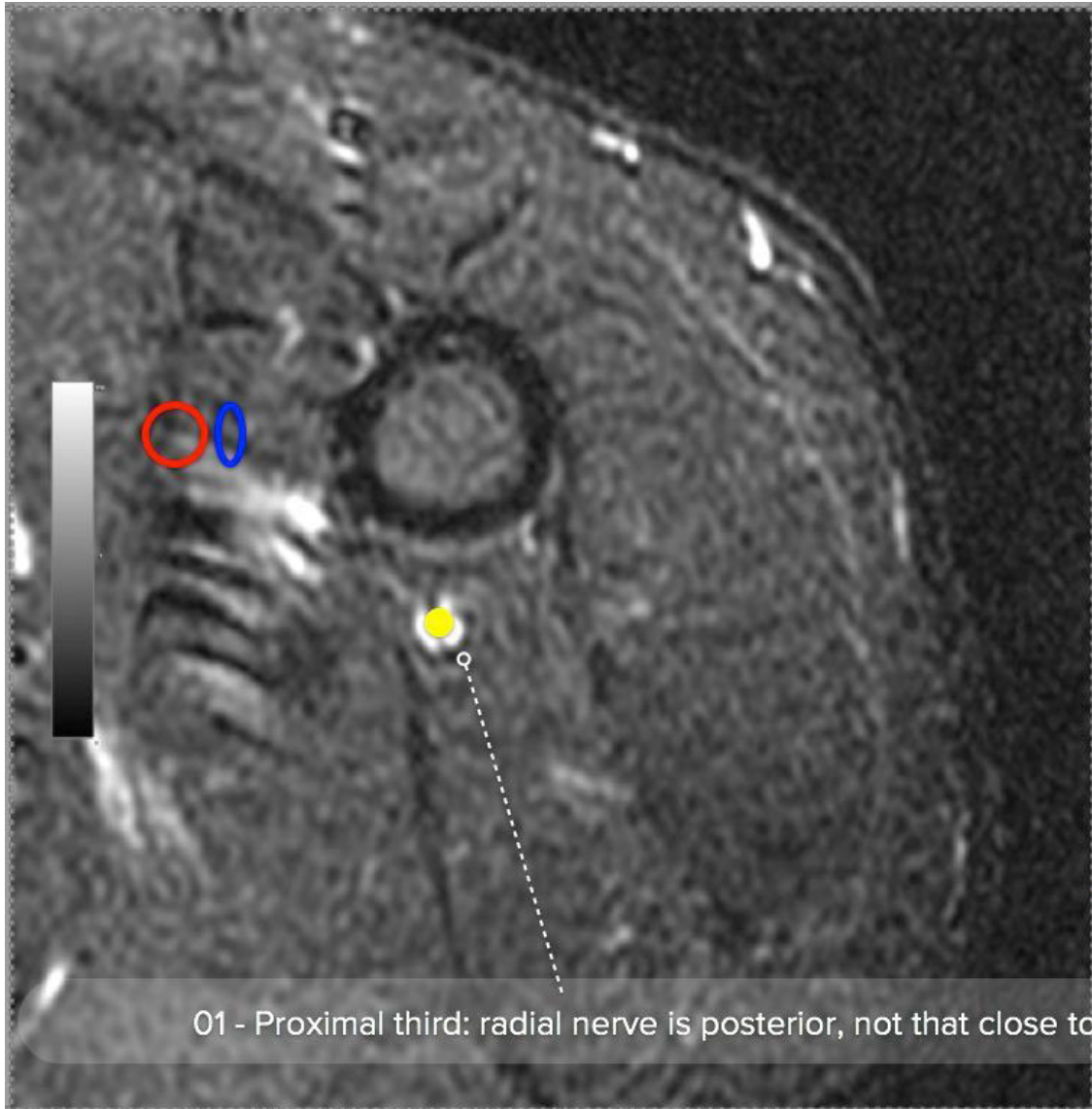
HELICAL PLATE

RELATIONSHIP OF RADIAL NERVE TO HUMERAL SHAFT

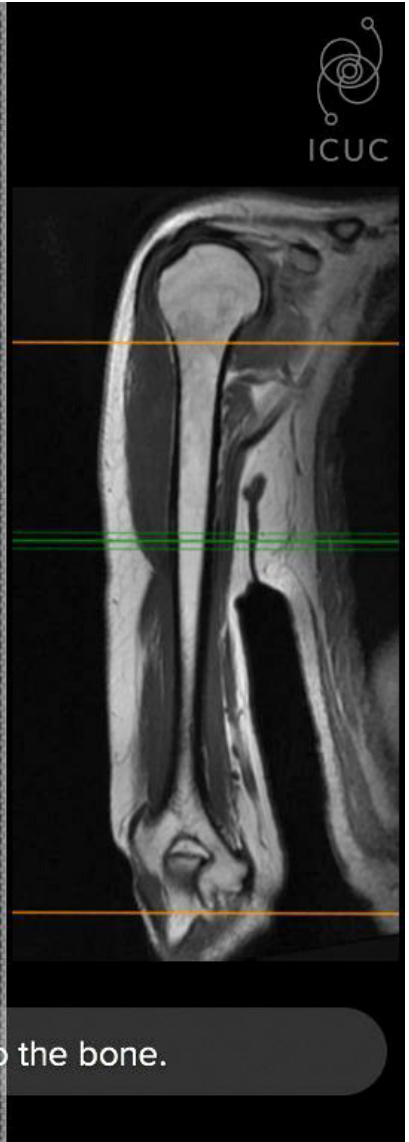
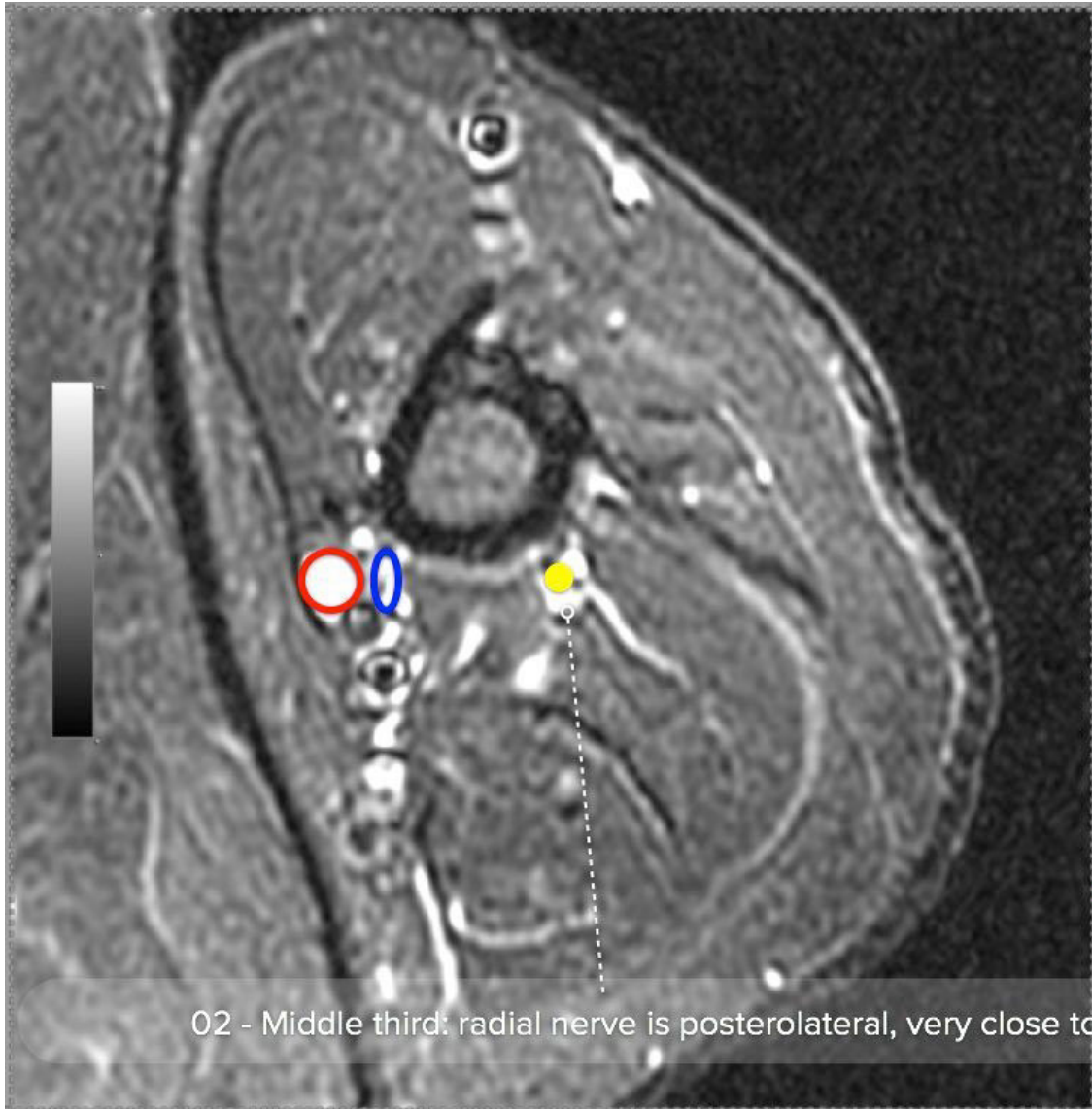
Normal Anatomy

Normal Anatomy





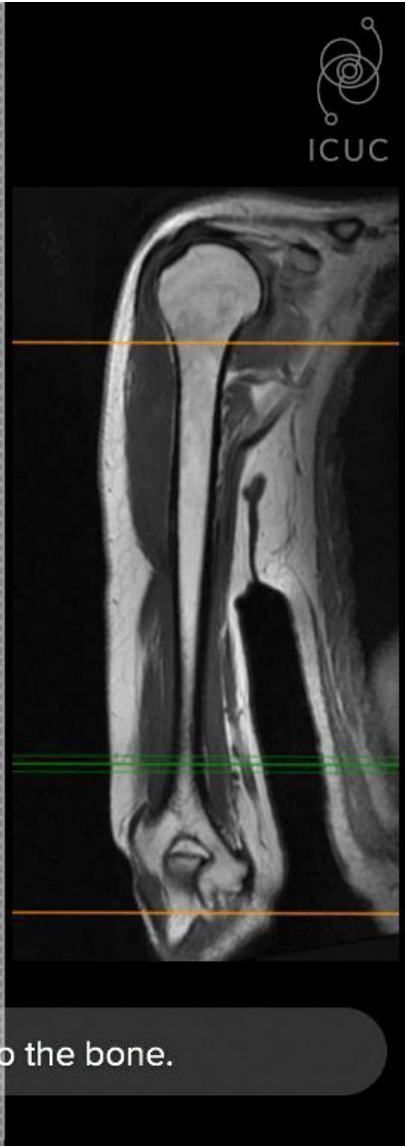
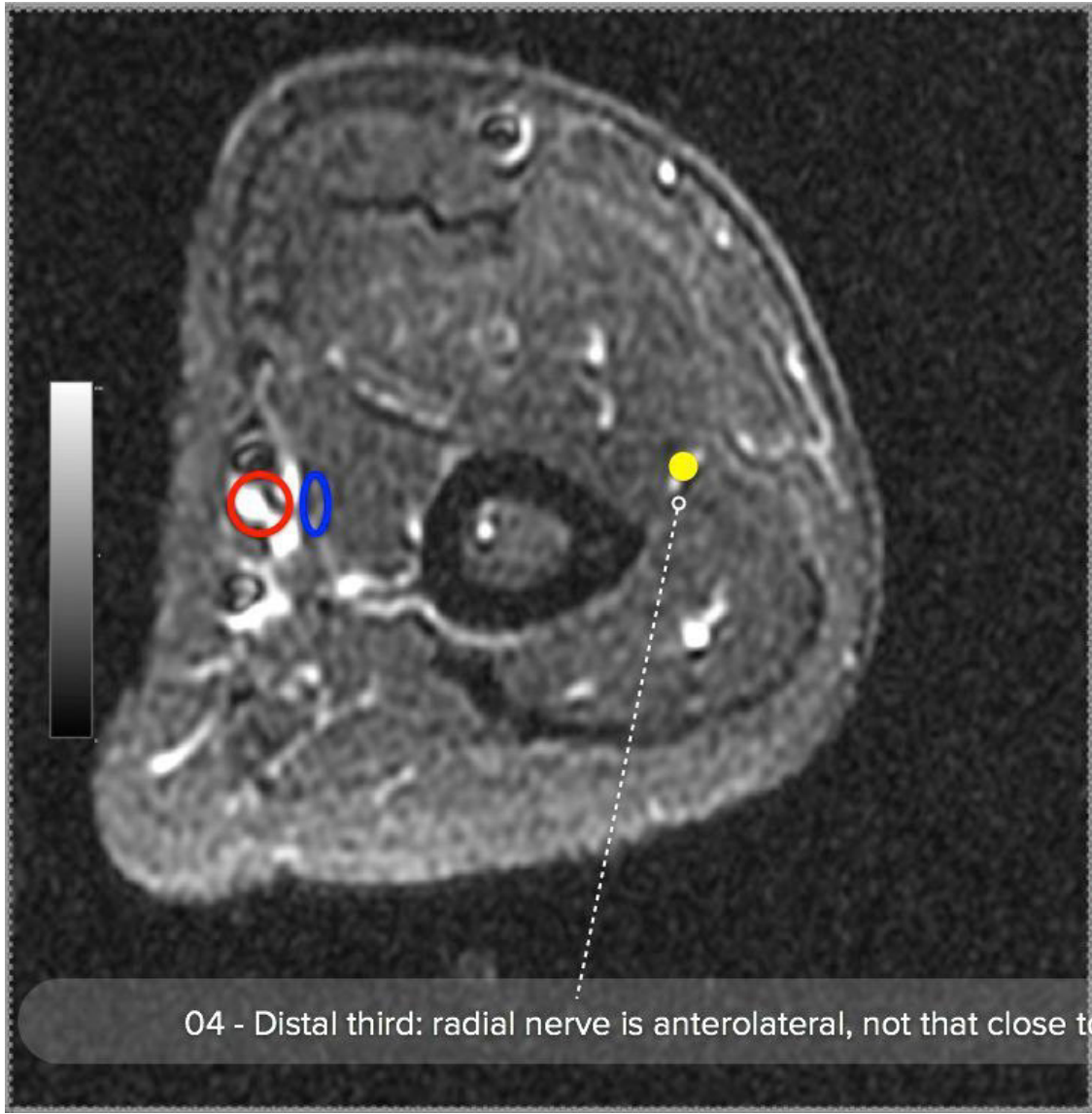
01 - Proximal third: radial nerve is posterior, not that close to the bone.



02 - Middle third: radial nerve is posterolateral, very close to the bone.



03 - Middle third: radial nerve is lateral, very close to the bone.



04 - Distal third: radial nerve is anterolateral, not that close to the bone.